

## THE HOSPITAL WORLD.

## BALLINCOONA.

*Ballincoona, Caher Daniel,  
Co. Kerry.*

This is Ballincoona, our House of Help, the centre of the small work which we are so far able to do, the heart of the great work, which, with the help of God, those who come after us will carry out, to the lasting good of Ireland. Behind it rise the calm and silent hills, southward lies the unquiet, wayward, mysterious sea, with the Cork mountains on its further shore. Light, air, sunshine, and beauty have been our first thoughts in building. Nature is the most scientific of doctors, the most sympathetic and skilled of nurses.

Built on a gravel ridge, outcropping from the bogland, our hospital is of stone, very simple in construction, as all modern homes for sick people are bound to be. Exposed to all winds and weathers, the walls are two and a-half feet thick, cemented and pebble dashed on the outside. There are two wards holding six beds each and twenty-two smaller rooms, exclusive of baths and sanitary arrangements. Our smaller rooms are not allocated to any special purpose. We await the development of events. Our balconies are not yet completed. They will give us space for four or five more beds. We can accommodate twenty-two patients at all events.

The centre is occupied by the administrative block. In it are included the operating theatre, anæsthetic room, surgery and dispensary, and also the large hall, separated from the patients' quarters, where we hope to have many pleasant gatherings. The wing holds the larger wards. In years to come it may be necessary to add the second wing at the western end, beyond the gables. The administrative block will then serve the double purpose, as originally designed.

Since our last report, our large steel rain-water tank (30 ft. long by 11 ft. 6 in. wide and 5 ft. deep) has gone up at the east end. The internal aspect has entirely altered. We have eight and a-half

months' work to record. Our acetylene gas and electric bell installations are in. Our rooms are now all partitioned off. The carpentering and plastering is practically completed on the two upper floors, and three parts done on the ground floor, with some exceptions, such as the sanitary arrangements on two floors, which could not be touched until our rain-water tank at the eastern end was in place and roofed. It will take us some weeks to finish the plastering and to put in our circular iron stairs, fit up the goods lift, and the small dinner lift, settle our stoves, fix our banisters, make our lower balcony, roof our upper balcony, and the large tank, fine our concrete tanks and floors, and set in the banisters on our external staircases. The materials for these works are, with small exceptions, already on the ground.

It was cheering to us to have the verdict of the Matron from one of our greatest London hospitals, that Ballincoona compares favourably in up-to-date arrangements with the newest Metropolitan hospitals.

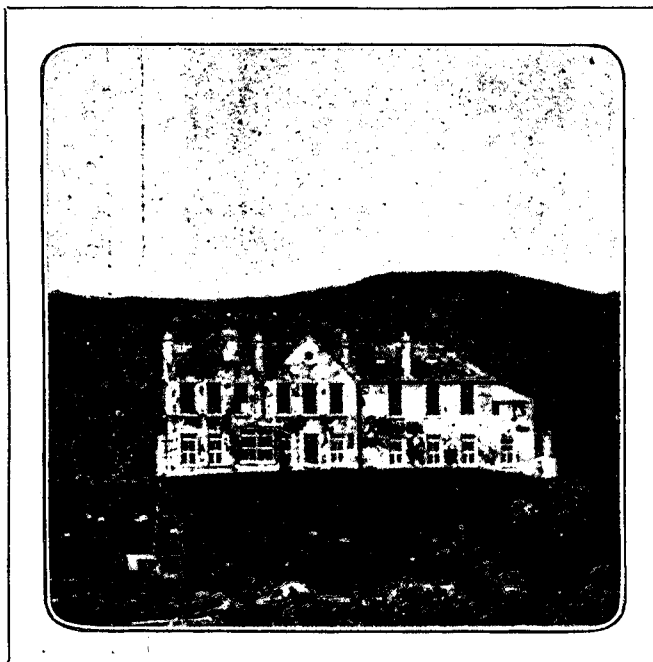
Outside again, we have built our gas, boiler and disinfectant house, our dairy, and a much-needed addition to the farm buildings, chiefly from stone met with in the course of draining for our little fruit farm, whose bushes we hope to plant this autumn.

We are just beginning the house and farm sewerage.

The plans for this we owe to our kind friend, Dr. Matthews, Senior Sanitary Inspector of Stoke Newington, who generously spent his holiday in our service, measuring, taking levels, and working out the scheme of drainage.

Our total expenditure upon our whole work, including the initial and yearly expenditure upon the farm, has been £11,723 9s. 5d. up to date, £5,871 of which has gone in wages. Of the total amount, £1,732 15s. has been received from our most kind subscribers in sums varying from 6d. to £25. This includes a sum of £60, the result of a concert and meeting in and donations from Ashton-under-Lyne, for which it is difficult to be sufficiently grateful.

The want of funds will not allow us to think of



BALLINCOONA.—THE HOUSE OF HELP.

*previous page*

*next page*